



# TRUE EAST ENERGY CORP.

Power rising in the East.

---

COMPANY PROFILE · [TRUEEASTENERGY.COM](http://TRUEEASTENERGY.COM)

2026

## CONTENTS

---

### **POWER RISING IN THE EAST** .....

Why we exist .....

At a glance .....

### **BUILT BY AN ENGINEER, FROM A RICE MILL** .....

Engr. Vincent Vir M. Agbayani .....

### **SOLAR, SIZED TO YOUR BUILDING** .....

On-Grid Solar Systems .....

Hybrid Systems with Battery Storage .....

### **FIVE STEPS, ONE ACCOUNTABLE TEAM** .....

Why True East .....

### **REAL ROOFS, REAL METERS** .....

### **SEVENTEEN ROOFS, TWO FLAGSHIPS** .....

Completed .....

In construction .....

### **REGISTERED, COMPLIANT, ACCOUNTABLE** .....

Contact .....

— THE COMPANY

# POWER RISING IN THE EAST

**Turn-key solar that an engineer designs, builds and stays accountable for. The same care that runs a rice mill now keeps hospitals working on sunlight.**

True East Energy Corp. is a Philippine stock corporation in power generation, transmission and distribution. The company is engineer-led, not sales-led. Every system is designed, built and supported by a Registered Electrical Engineer.



THE 350 KWP ROOFTOP ARRAY THAT STARTED IT ALL, AT THE VM AGBAYANI RICEMILL IN ORIENTAL MINDORO.

**550+**

KWP COMMISSIONED

**17**

INSTALLATIONS COMPLETED

**14**

YEARS ENGINEERING  
LEADERSHIP

**250**

KWP IN CONSTRUCTION

## WHY WE EXIST

True East began inside a working rice mill, where the electricity bill never stopped growing. High running costs made reliable, affordable power a daily problem, not a someday goal. So the company started fitting solar that cuts the bill and keeps working through the next brownout.

What fixed one mill became the way we work: size the system to the building, install it properly, and stay on the line afterwards. The same care now goes into mills, schools, clinics, parishes, government buildings and homes across Oriental Mindoro and beyond.

## AT A GLANCE

REGISTERED NAME	True East Energy Corp.
SEC REGISTRATION	202406015446-02
FOUNDED	2024
COMPANY TYPE	Stock Corporation in power generation, transmission and distribution
PROCUREMENT	PhilGEPS-registered
SECTORS SERVED	Industrial · Healthcare · Government · Hospitality · Institutional · Residential · Commercial · Faith
HEAD OFFICE	Bongabong, Oriental Mindoro, Philippines
WEB	trueeastenergy.com

**We help clients cut their electricity costs and their carbon footprint, and we back the wider shift to renewable energy with systems that are innovative, sustainable and dependable.**

### LEADERSHIP

## BUILT BY AN ENGINEER, FROM A RICE MILL

### ENGR. VINCENT VIR M. AGBAYANI

Principal Electrical Engineer and Founder

Registered Electrical Engineer · Mapúa University · 14 years of plant experience

He trained at Mapúa University and spent 14 years as a plant engineer. Every project is designed, engineered and managed by him, sized for efficiency and built to last. That is why True East is engineer-led, not sales-led, and why one accountable team carries each job from engineering and design through procurement, installation and after-sales support.

**“The savings case isn’t a pitch here. We lived it on our own electricity bill first.”**

---

# SOLAR, SIZED TO YOUR BUILDING

Two systems, one engineering standard. We size the array to your building and your load, never to a catalogue, and stay with it from the first site visit to long after switch-on.

## ON-GRID SOLAR SYSTEMS

Roof-mounted solar installations connected directly to the power grid. The array carries your daytime load and the grid covers the rest, so businesses and households see a lower electricity bill and a lighter dependence on the utility, with no batteries to maintain.

- ◆ Lowest cost per installed kilowatt-peak
- ◆ Offsets daytime consumption immediately
- ◆ Reduced dependence on rising utility rates
- ◆ Minimal maintenance, decades of generation

**Best for:** mills, schools, shops and homes that use most of their power by day.



---

ON-GRID ARRAY CARRYING THE DAYTIME INDUSTRIAL LOAD AT THE VM AGBAYANI RICEMILL.

## HYBRID SYSTEMS WITH BATTERY STORAGE

Solar panels combined with batteries that store excess energy for use at night or during outages. Hybrid systems maximise self-consumption and provide backup supply, built for hotels, clinics and homes in areas with frequent brownouts or an unstable grid.

- ◆ Stored power for night use and outages
- ◆ Continuity through brownouts and grid instability
- ◆ Maximised solar self-consumption
- ◆ Energy security where it matters most

**Best for:** hospitals, hotels and homes that cannot afford to lose power.



ROUND-THE-CLOCK RESILIENCE: HYBRID SOLAR AND BATTERY STORAGE AT DR. FONTE MEDICAL CLINIC AND PHARMACY.

#### — THE TURN-KEY PACKAGE

## FIVE STEPS, ONE ACCOUNTABLE TEAM

One team, accountable from the first measurement to long after switch-on.  
Cost-effective, reliable, and built around what the client actually needs.

- 01 ENGINEERING** A registered electrical engineer assesses the site, the load profile and the structure, so every system is sized to the building, not a catalogue.
- 02 DESIGN** Array layout, electrical design and yield modelling are drawn up for maximum efficiency and a clean, code-compliant install.
- 03 PROCUREMENT** Panels, inverters and storage are sourced and specified. The equipment that carries decades of generation is chosen, not improvised.

## 04

### INSTALLATION

A controlled, engineer-supervised build. Mounting, wiring and commissioning handled end to end by the team that designed it.

---

## 05

### AFTER-SALES SUPPORT

Monitoring, maintenance and a direct line back to the people who built the system. The relationship does not end at switch-on.

---

## WHY TRUE EAST

### ENGINEER-LED, NOT SALES-LED

Every project is designed, engineered and managed by a Registered Electrical Engineer with 14 years of plant experience.

### A GENUINE TURN-KEY PACKAGE

Engineering, design, procurement, installation and after-sales support under one accountable roof.

### BUILT FROM REAL OPERATING PAIN

Founded out of a rice mill fighting its own electricity costs, so the savings case is lived, not pitched.

### PHILGEPS-REGISTERED

Eligible for government and public-sector procurement, in full compliance with national standards.

— SELECTED WORK

# REAL ROOFS, REAL METERS

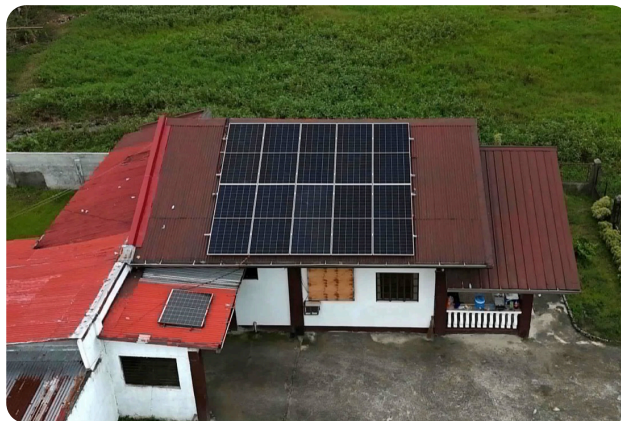
A spread of the work across institutions, hospitality and homes. On-grid and hybrid, every system engineered to its building.



CLARENDON COLLEGE. 60 KWP ON-GRID, INSTITUTIONAL.



CONTHEA INN AND RESTAURANT. 10 KWP HYBRID, 2 × 280 AH STORAGE, HOSPITALITY.



KAYZELLE GUTIERREZ RESIDENCE. 6 KWP HYBRID, 280 AH STORAGE, RESIDENTIAL.

---

**PROJECT PORTFOLIO**


---

# SEVENTEEN ROOFS, TWO FLAGSHIPS

Seventeen installations are complete, and two flagship commissions are in construction: a 100 kWp public-sector array for LGU Roxas under PhilGEPS procurement, and 150.04 kWp keeping Pinamalayan Doctors Hospital running on sunlight. That hospital is the largest job True East has taken on so far.

## COMPLETED

PROJECT	LOCATION	SECTOR	SYSTEM	KWP
VM Agbayani Ricemill	Oriental Mindoro	Industrial	On-Grid	350
Agbayani Agro Industrial Corp.	Oriental Mindoro	Industrial	On-Grid	12
Clarendon College	Oriental Mindoro	Institutional	On-Grid	60
VGASS Gasoline Station	Oriental Mindoro	Commercial	On-Grid	10
MMM Clothing Shop	Oriental Mindoro	Commercial	On-Grid	10
Randy Lolong Residence	Oriental Mindoro	Residential	On-Grid	10
Nikki Miki Store	Romblon	Commercial	On-Grid	n/a
DLEE Bolinas Hotel	Oriental Mindoro	Hospitality	Hybrid	20
Conthea Inn & Restaurant	Oriental Mindoro	Hospitality	Hybrid	10
Rancho Bernardo	Oriental Mindoro	Hospitality	On-Grid	10
Kayzelle Gutierrez Residence	Oriental Mindoro	Residential	Hybrid	6
Dr. Fonte Medical Clinic & Pharmacy	Oriental Mindoro	Healthcare	Hybrid	20
MDRRMO, Roxas	Roxas, Oriental Mindoro	Government	On-Grid	n/a
Escala Canteen	Bongabong, Oriental Mindoro	Commercial	On-Grid	6
Gerry Mangante Residence	Oriental Mindoro	Residential	On-Grid	8
St. Catherine de Alexandria Parish	Oriental Mindoro	Faith	On-Grid	11.16

PROJECT	LOCATION	SECTOR	SYSTEM	KWP
Renante Fetizanan Residence	Oriental Mindoro	Residential	On-Grid	8

## IN CONSTRUCTION

PROJECT	LOCATION	SECTOR	SYSTEM	KWP
Municipal Building, LGU Roxas	Roxas, Oriental Mindoro	Government	On-Grid	100
Pinamalayan Doctors Hospital	Pinamalayan, Oriental Mindoro	Healthcare	On-Grid	150.04

Hybrid systems include battery storage. DLEE Bolinas Hotel carries 560 Ah, Conthea Inn and Restaurant 2 x 280 Ah, and Dr. Fonte Medical Clinic and the Kayzelle Gutierrez Residence 280 Ah each.

### — ON THE RECORD

# REGISTERED, COMPLIANT, ACCOUNTABLE

REGISTERED NAME	True East Energy Corp.
SEC REGISTRATION	202406015446-02
COMPANY TYPE	Stock Corporation
SCOPE	Generation · Transmission · Distribution
PROCUREMENT	PhilGEPS-registered
FOUNDED	2024
HEAD OFFICE	Bongabong, Oriental Mindoro

## CONTACT

The engineer who will design your system reads every enquiry. Send your building details and a recent electricity bill.

ADDRESS	GF VMA Admin. Bldg, Strong Republic Nautical Highway, Bongabong, Oriental Mindoro, Philippines
---------	--

EMAIL trueeastenergy@gmail.com

---

PHONE +63 917 586 9175

---

WEB trueeastenergy.com

---

ON THE RECORD SEC 202406015446-02 · PhilGEPS-registered

---

---

TRUE EAST ENERGY CORP. · POWER RISING IN THE EAST · TRUEEASTENERGY.COM